

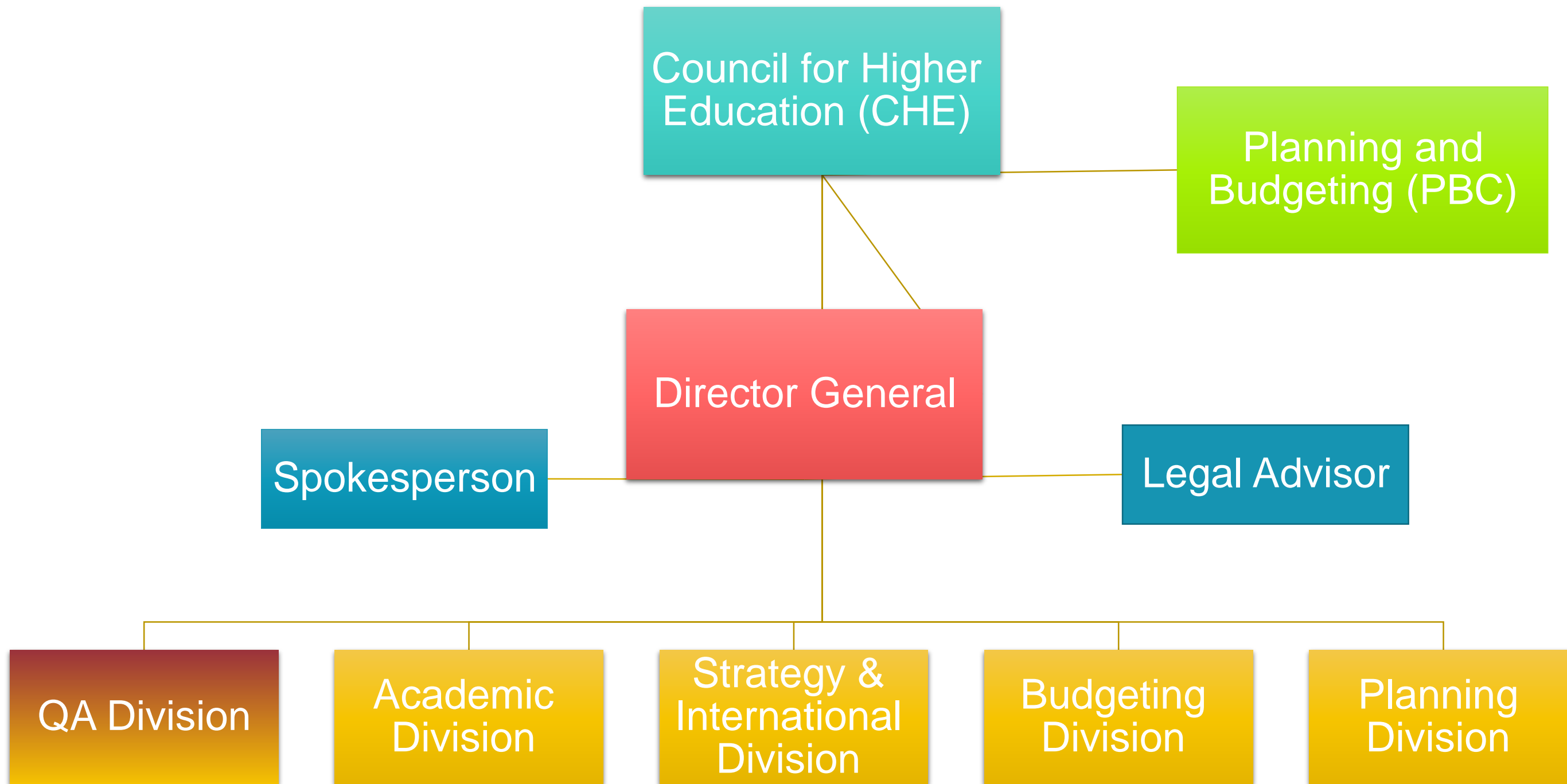
# The QA System

## Council for Higher Education

### ISRAEL



# CHE & PBC Administrative Structure

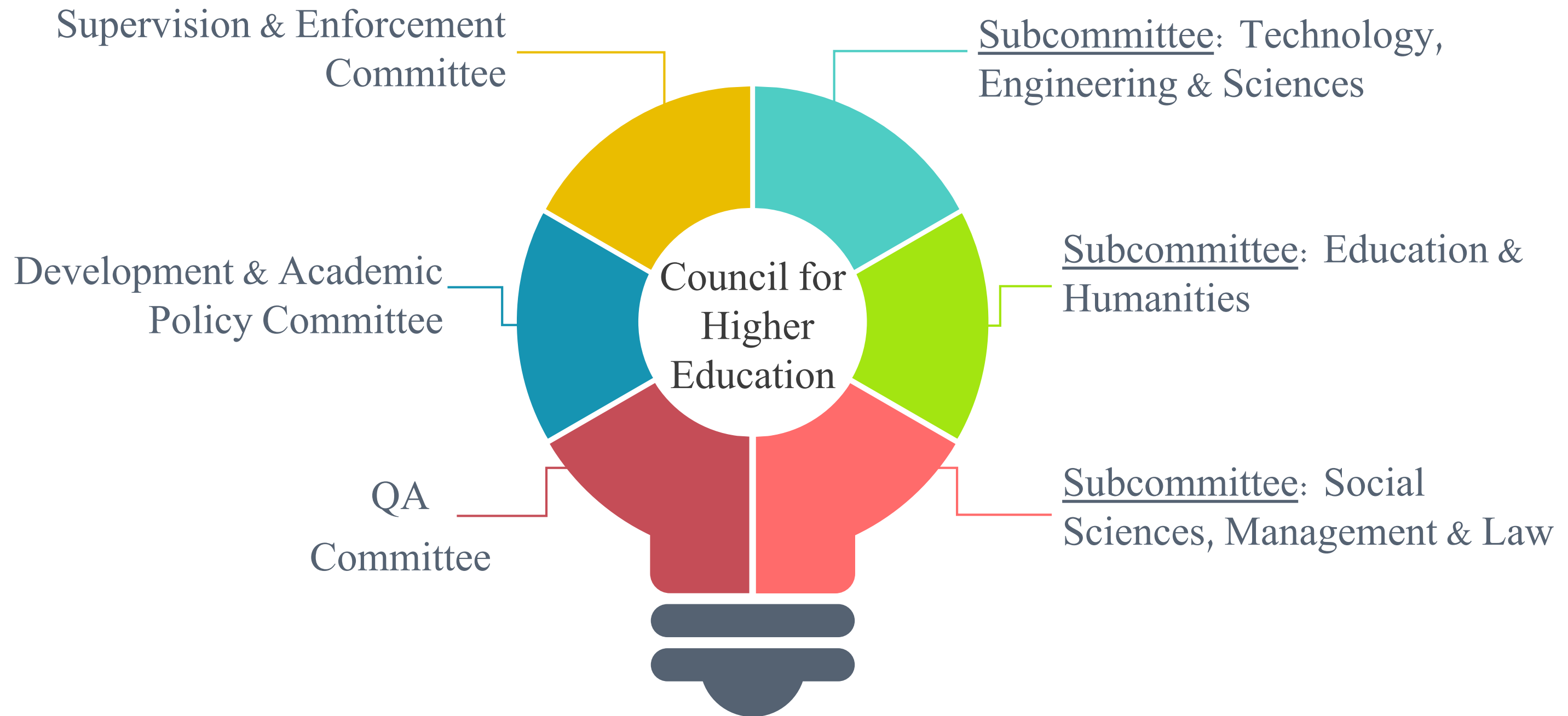


PBC is responsible for funds allocations for HE

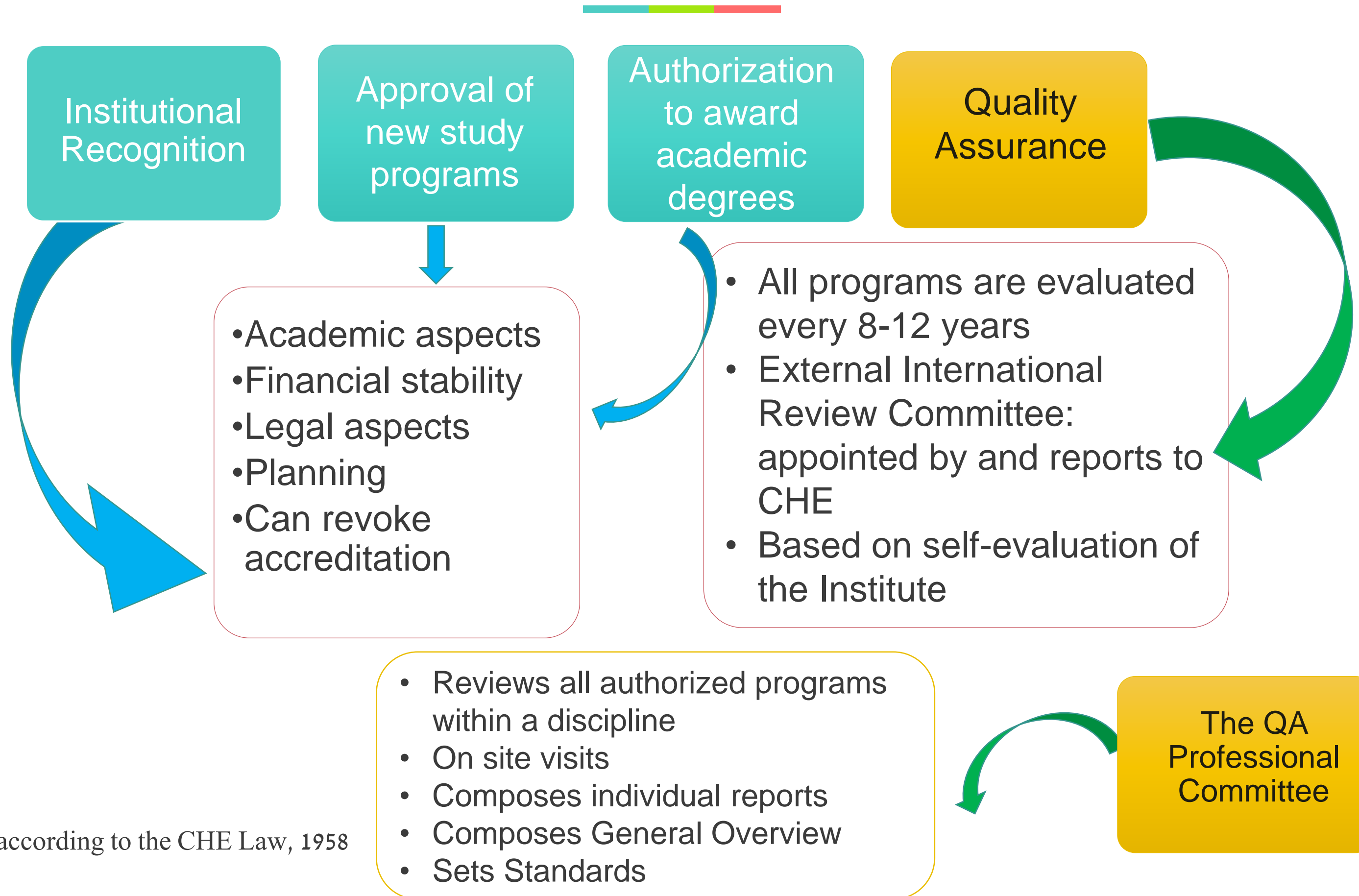
**7 members:**

4 university representatives.  
1 college representative.  
2 public representatives.

# CHE – Structure & Committees



# CHE Responsibilities\*:



\*according to the CHE Law, 1958

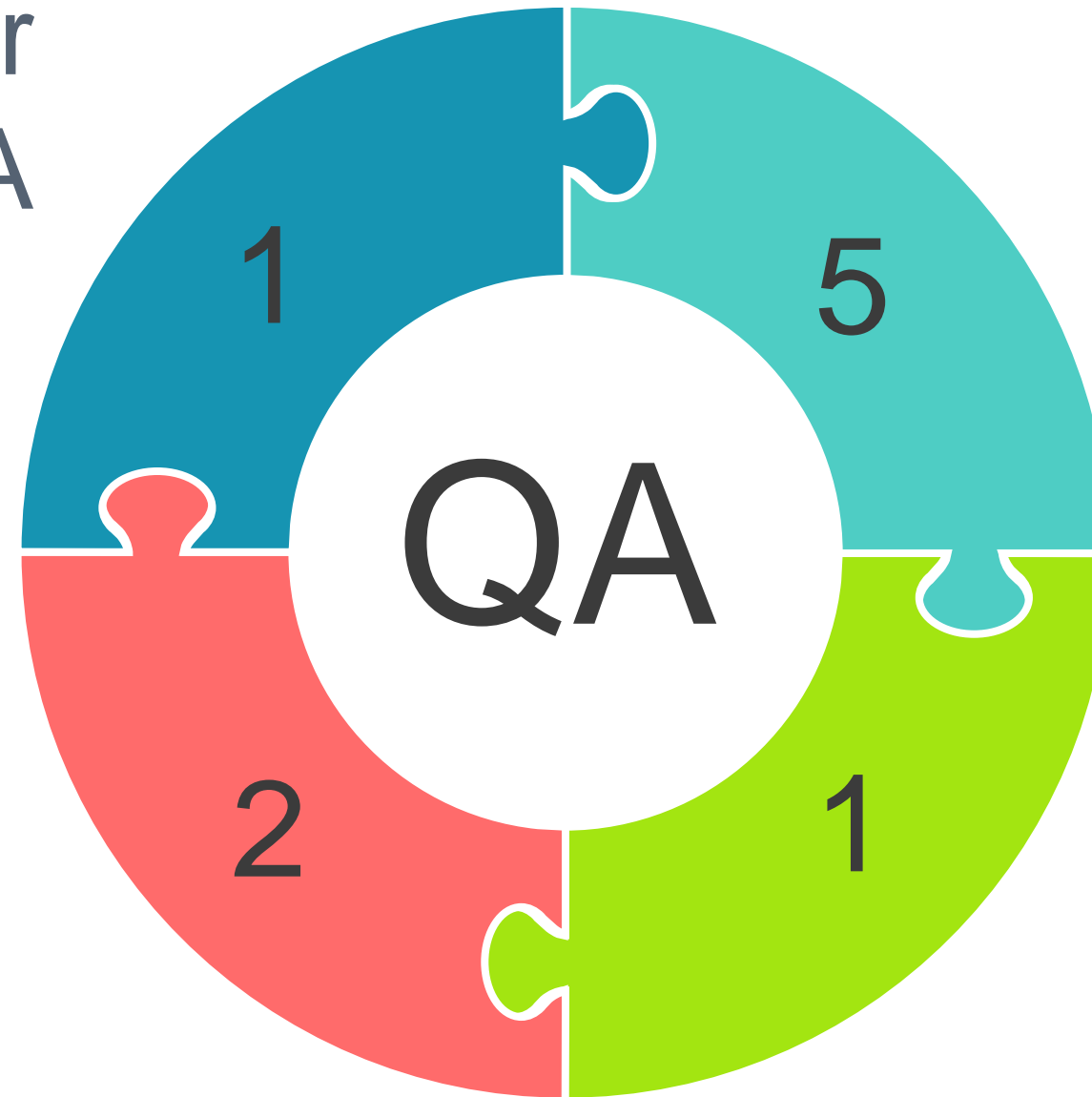
# QA Division Structure

Deputy Director  
General for QA

Senior  
Coordinators

Student  
Employees

Administrative  
Coordinator



# Development of the QA System in Israel



The diagram is a vertical timeline with a central dotted line. At the top, there is a horizontal bar with three segments: cyan, lime green, and red. Below this, a dark grey teardrop shape points downwards. The timeline features three main nodes: 1. A cyan square labeled '2003' on the left, connected to a cyan circle on the central line. To its left is the text 'June' underlined, followed by a paragraph: 'The CHE adopts the recommendation of a National Committee to institute Quality Assessment and Assurance throughout the entire HE System'. 2. A lime green square labeled '2004' on the right, connected to a lime green circle on the central line. To its right is the text 'February' underlined, followed by a paragraph: 'The CHE establishes a QA unit and the first two disciplines are chosen for a pilot evaluation.' Below this is another paragraph: 'From 2005 the process is on its way.' 3. A red square labeled '2016-' on the left, connected to a red circle on the central line. To its left is the text 'January' underlined, followed by a paragraph: 'Rethinking the QA model based on experience and international changes in HE and in QA systems'.

June

The CHE adopts the recommendation of a National Committee to **institute Quality Assessment and Assurance** throughout the entire HE System

2003

2004

February

The CHE establishes a QA unit and the first two disciplines are chosen for a pilot evaluation.

From 2005 the process is on its way.





2016-

January

Rethinking the QA model based on experience and international changes in HE and in QA systems

# Main objectives of QA



-  To cultivate a culture of **continuous quality improvement** in the Israeli Higher Education System, and helping institutions of higher education understand the importance of the QA process.
-  Driving and helping HEIs to develop **internal QA mechanisms** to constantly evaluate and assure academic quality.
-  To adopt and adapt **International Standards** into the QA system.
-  Creating/generating and disseminating information and data regarding the quality of the Israeli HE system to the public.

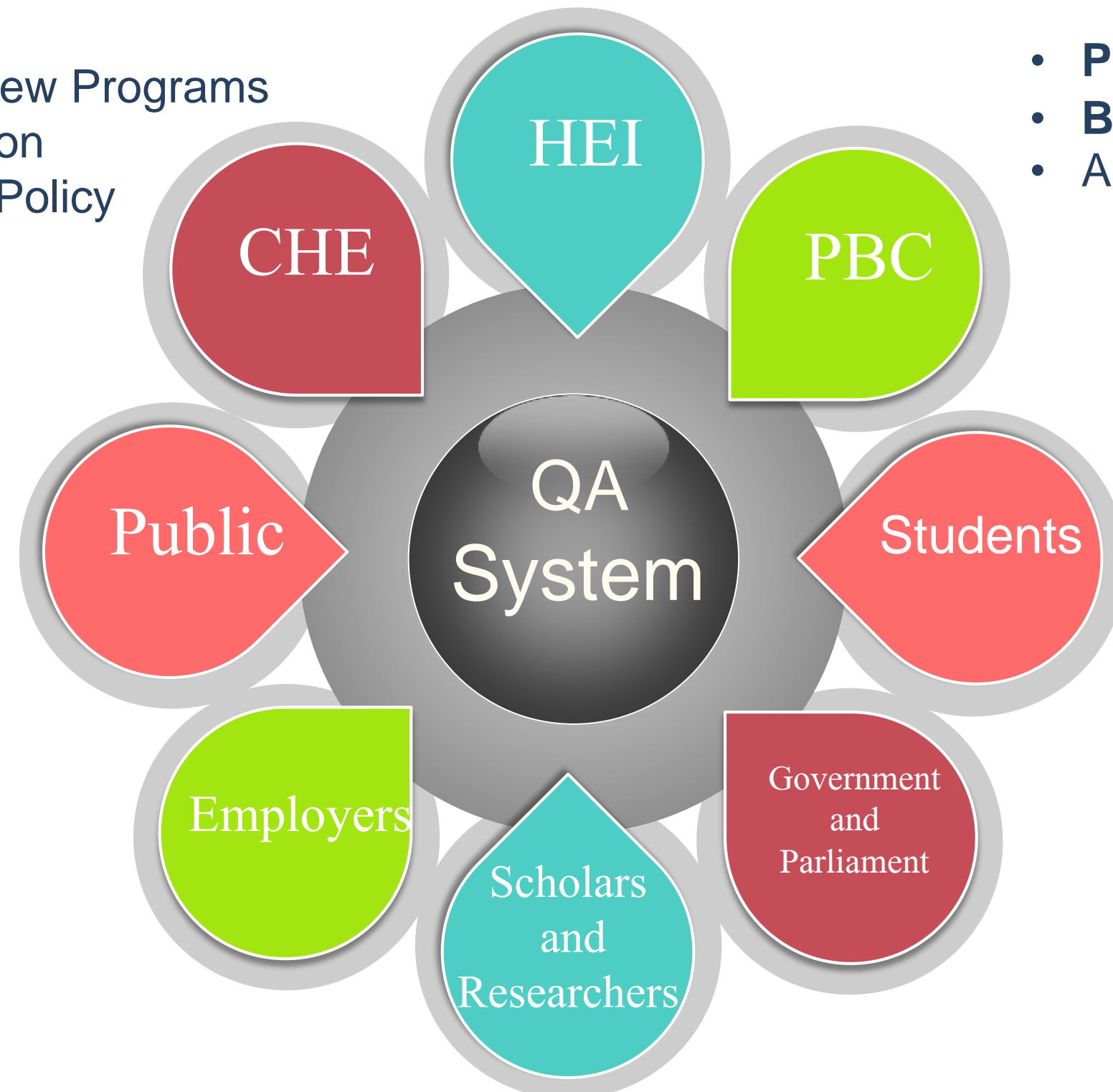
# Stake Holders of the Quality Assurance processes



- Departments: improvement
- Administration
- Admission of graduate students

- Opening New Programs
- Accreditation
- Academic Policy

- **Planning: multi-year plan**
- **Budgeting**
- Adjusting budgeting (subject tariff)





# Quality Assessment & Assurance

---

## QA of Study Fields

- Reviewed over 60 disciplines in more than 300 departments (and continuing)
- Ultra orthodox programs
- Second cycle of evaluation (which focused on the changes – delta – since the previous evaluation)

## QA of General HE Issues

- Excellence initiative in teaching and learning
- International accreditation of Medical schools in Israel
- Based on the system's needs: English for academic purposes

## QA of Research Centers

- Marine Sciences
- Israel National Research Center for Electrochemical Propulsion

## QA in the Academic Education Colleges

- English teachers education
- Early childhood education
- Arab teachers education

# Future plans



Continuous improvement in the quality of programs

Internal quality assurance capacity building

Enhancement of Quality assurance of research

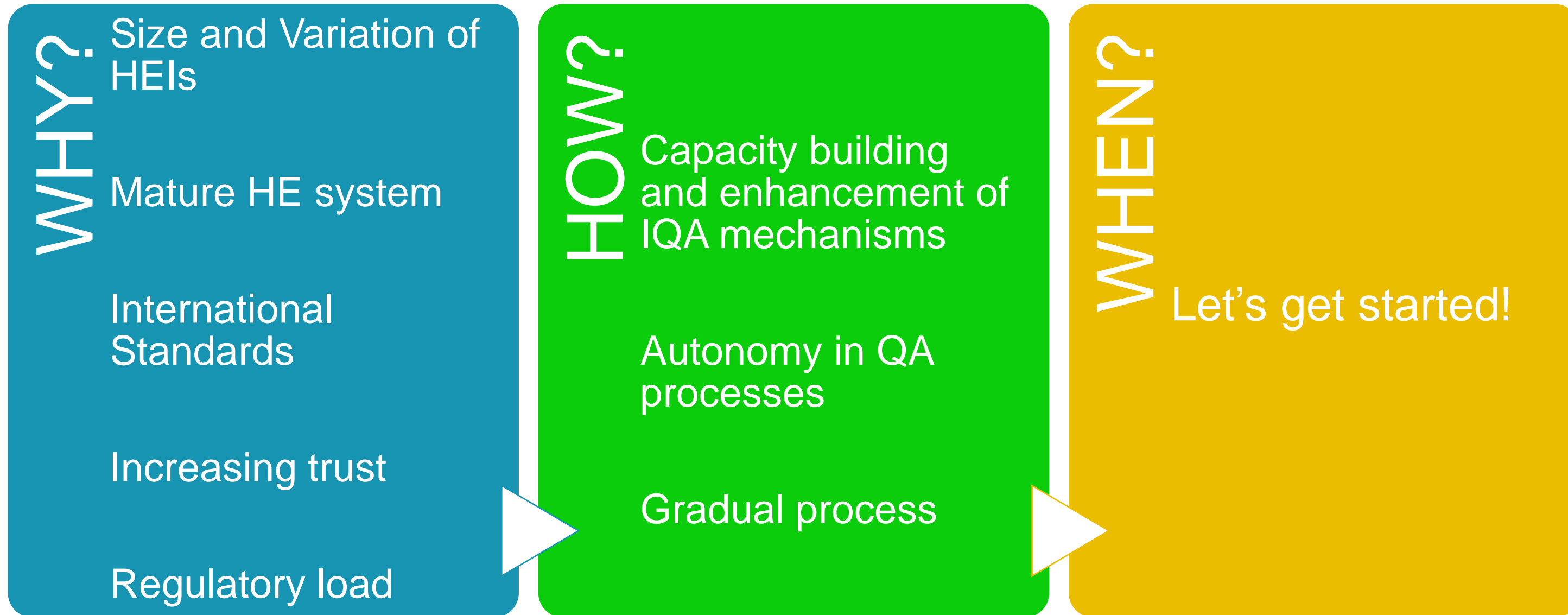
Excellence and innovation in teaching and learning

Quality assurance of unique programs in higher education

Quality assurance based on national or specific needs

# Institutional Internal Quality Assurance

---



THANK  
YOU

